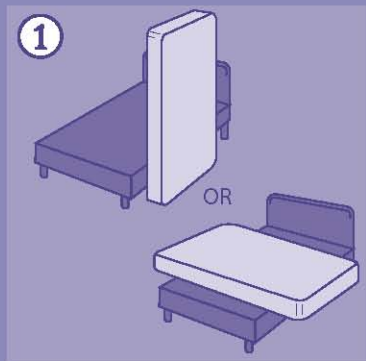


# THE BEDBUG SOLUTION

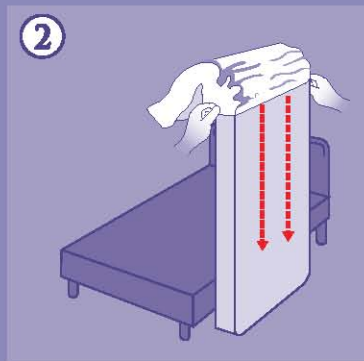
## ZIPPED MATTRESS AND BOXSPRING COVER

COVER SHOULD REMAIN ON MATTRESS OR BOXSPRING FOR AT LEAST 1 YEAR TO ACHIEVE MAXIMUM EFFECTIVENESS.

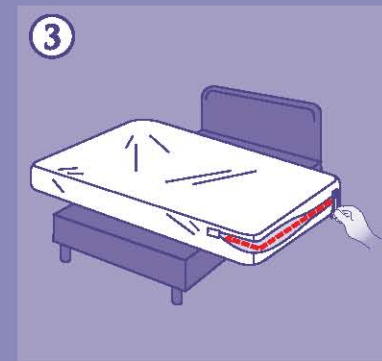
### INSTALLATION INSTRUCTIONS:



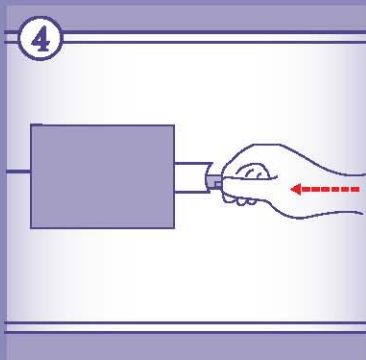
Stand mattress or boxspring on end.



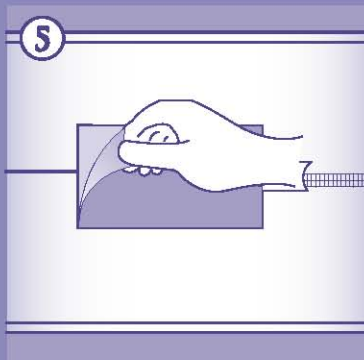
Gently ease the cover over the end of the mattress or boxspring.  
Do not pull the cover from the end, especially not from the zipper.



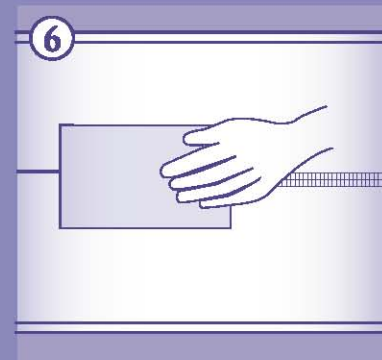
Once the cover is completely on, smooth the internal flap down over the end of the mattress.



Gently close the zipper completely until the zipper end is inside the "tunnel."



Peel the protective backing from the tape.



Place the tape over the zipper and press firmly.

### TO LAUNDRY OR REMOVE COVER:

- Gently peel the tape back from the cover.
- Unzip the cover completely.
- Gently ease the cover off the mattress/boxspring.
- BEFORE WASHING, ZIP COVER COMPLETELY CLOSED AND GENTLY PLACE TAPE OVER THE ZIPPER.



### CARE INSTRUCTIONS:

Machine wash and tumble dry in temperatures up to 140° F.



Patent Pending  
RN# 121465  
Bedbug/SKBI  
 Made in USA  
 Made in China